

LOS ANGELES UNIFIED SCHOOL DISTRICT

SCHOOL CONSTRUCTION BOND CITIZENS' OVERSIGHT COMMITTEE

**D. Michael Hamner, FAIA, Chair**  
American Institute of Architects

**Robert Campbell, Vice-Chair**  
L.A. Co. Auditor-Controller's Office

**Dr. Samantha Rowles, Secretary**  
LAUSD Student Parent

**Patrick MacFarlane, Executive Committee**  
Early Education Coalition

**Scott Pansky, Executive Committee**  
L.A. Area Chamber of Commerce

**Joseph P. Buchman – Legal Counsel**  
Burke, Williams & Sorensen, LLP

**Lori Raineri and Keith Weaver – Oversight  
Consultants**

Government Financial Services Joint  
Powers Authority

**Neelura Bell**  
CA Charter School Association

**Sandra Betts**  
CA Tax Reform Assn.

**Chad Boggio**  
L.A. Co. Federation of Labor AFL-CIO

**Aleigh Lewis**  
L.A. City Controller's Office

**Jennifer McDowell**  
L.A. City Mayor's Office

**Brian Mello**  
Assoc. General Contractors of CA

**Santa Ramirez**  
Tenth District PTSA

**William O. Ross IV**  
31<sup>st</sup> District PTSA

**Ashley Kaiser (Alternate)**  
Assoc. General Contractors of CA

**Connie Yee (Alternate)**  
L.A. Co. Auditor-Controller's Office

**Vacant**  
Senior Citizens' Organization

**Vacant**  
LAUSD Student Parent

**Timothy Popejoy**  
Bond Oversight Administrator

**Perla Zitle**  
Bond Oversight Coordinator

---

**RESOLUTION 2024-32**

**BOARD REPORT NO. 063-24/25**

**RECOMMENDING BOARD APPROVAL TO DEFINE AND APPROVE 13 BOARD  
DISTRICT PRIORITY AND REGION PRIORITY PROJECTS AND AMEND THE  
FACILITIES SERVICES DIVISION STRATEGIC EXECUTION PLAN TO  
INCORPORATE THEREIN**

WHEREAS, District Staff proposes the Board of Education define and approve 13 Board District Priority and Region Priority Projects (as listed on Exhibit A of Board Report No. 063-24/25) and amend the Facilities Services Division (Facilities) Strategic Execution Plan (SEP) to incorporate therein. The total budget for these proposed projects is \$708,587; and

WHEREAS, District Staff proposes the Board of Education authorize the Chief Procurement Officer and/or the Chief Facilities Executive and/or their designee(s) to execute all instruments necessary, as legally permissible, to implement the proposed projects, including budget modifications and the purchase of equipment and materials; and

WHEREAS, Projects are developed at the discretion of the Board Districts and/or Regions based upon an identified need with support from Facilities staff and input from school administrators; and

WHEREAS, District Staff have determined the proposed projects are consistent with the District's commitment to address unmet school facilities needs and provide students with a safe and healthy learning environment; and

WHEREAS, Funding for the 13 proposed projects will come from Board District Priority Funds and Region Priority Funds; and

WHEREAS, the District's Office of the General Counsel has reviewed the proposed Projects and determined that they may proceed to the School Construction Bond Citizens' Oversight Committee for its consideration for recommendation to the Board of Education; and

**RESOLUTION 2024-32**

**RECOMMENDING BOARD APPROVAL TO DEFINE AND APPROVE 13 BOARD DISTRICT PRIORITY AND REGION PRIORITY PROJECTS AND AMEND THE FACILITIES SERVICES DIVISION STRATEGIC EXECUTION PLAN TO INCORPORATE THEREIN**

WHEREAS, District Staff has concluded this proposed Facilities SEP amendment will facilitate Los Angeles Unified’s ability to successfully complete the Facilities SEP.

NOW, THEREFORE, BE IT RESOLVED THAT:

1. The BOC recommends the Board of Education define and approve 13 Board District Priority and Region Priority Projects with a combined budget of \$708,587, and amend the Facilities SEP to incorporate therein, as described in Board Report No. 063-24/25, a copy of which is attached hereto in the form it was presented to the BOC and is incorporated herein by reference.
2. This resolution shall be transmitted to the Los Angeles Unified School District Board of Education and posted on the BOC’s website.
3. The District is directed to track the above recommendation and to report on the adoption, rejection, or pending status of the recommendations as provided in section 6.2 of the Charter and Memorandum of Understanding between the BOC and the District.

ADOPTED on October 10, 2024, by the following vote:

AYES: 11

ABSTENTIONS: 0

NAYS: 0

ABSENCES: 2

*/Michael Hamner/*

\_\_\_\_\_  
D. Michael Hamner  
Chair

*/Samantha Rowles/*

\_\_\_\_\_  
Dr. Samantha Rowles  
Secretary



## Board of Education Report

---

**File #:** Rep-063-24/25, **Version:** 1

---

### **Define and Approve 13 Board District Priority and Region Priority Projects and Amend the Facilities Services Division Strategic Execution Plan to Incorporate Therein**

**October 22, 2024**

#### **Facilities Services Division**

#### **Action Proposed:**

Define and approve 13 Board District Priority (BDP) and Region Priority (RP) projects, as listed on Exhibit A, and amend the Facilities Services Division (Facilities) Strategic Execution Plan (SEP) to incorporate therein. The total budget for these proposed projects is \$708,587.

Authorize the Chief Procurement Officer and/or the Chief Facilities Executive and/or their designee(s) to execute all instruments necessary, as legally permissible, to implement the proposed projects, including budget modifications and the purchase of equipment and materials.

#### **Background:**

Projects are developed at the discretion of the Board Districts and/or Regions based upon an identified need. These projects are developed with support from Facilities Services Division staff and input from school administrators.

Project scopes, schedules, and budgets may vary depending on site conditions and needs. All projects must be capital in nature and adhere to bond language and laws.

#### **Bond Oversight Committee Recommendations:**

This item was considered by the School Construction Bond Citizens' Oversight Committee (BOC) at its meeting on October 10, 2024, as referenced in Exhibit B. The presentation that was provided is included as Exhibit C. Staff has concluded that this proposed Facilities SEP amendment is in alignment with BOC recommendations and will facilitate Los Angeles Unified's ability to successfully implement the Facilities SEP.

#### **Expected Outcomes:**

Execution of these proposed projects will help improve the learning environment for students, teachers, and staff.

#### **Board Options and Consequences:**

Adoption of the proposed action will allow staff to execute the projects listed on Exhibit A. Failure to approve this proposed action will delay the projects and ultimately the anticipated benefit to the school and its students.

#### **Policy Implications:**

The requested actions are consistent with the Board-Prioritized Facilities Programs for BDP and RP projects and the District's commitment to address unmet school facilities needs and provide students with a safe and healthy learning environment. The proposed action advances Los Angeles Unified's 2022-2026 Strategic Plan Pillar 4 Operational Effectiveness Modernizing Infrastructure by providing capital improvements at schools.

**Budget Impact:**

The total combined budget for the 13 proposed projects is \$708,587. Four projects are funded by Bond Program funds earmarked specifically for RP projects. Nine projects are funded by Bond Program funds earmarked specifically for BDP projects.

Each project budget was prepared based on the current information known and assumptions about the proposed project scope, site conditions, and market conditions. Individual project budgets will be reviewed throughout the planning, design, and construction phases as new information becomes known or unforeseen conditions arise and will be adjusted accordingly to enable the successful completion of each proposed project.

**Student Impact:**

The proposed projects will upgrade, modernize, and/or improve school facilities to enhance the safety and educational quality of the learning environment to benefit approximately 9,920 current and future students.

**Equity Impact:**

Board Districts and Regions consider a number of factors, including equity, when identifying the need for BDP and RP projects.

**Issues and Analysis:**

This report includes a number of time-sensitive, small to medium-sized projects that have been deemed critical by Board Districts and/or Regions and school administrators.

**Attachments:**

Exhibit A - Board District Priority and Region Priority Projects

Exhibit B - BOC Resolution

Exhibit C - BOC Presentation

**Informatives:**

Not Applicable

**Submitted:**

09/18/24

**RESPECTFULLY SUBMITTED,**

**APPROVED BY:**

---

ALBERTO M. CARVALHO  
Superintendent

---

PEDRO SALCIDO  
Deputy Superintendent,  
Business Services and Operations

**REVIEWED BY:**

**APPROVED BY:**

---

DEVORA NAVERA REED  
General Counsel

---

KRISZTINA TOKES  
Chief Facilities Executive  
Facilities Services Division

\_\_\_ Approved as to form.

**REVIEWED BY:**

**PRESENTED BY:**

---

NOLBERTO DELGADILLO  
Deputy Chief Financial Officer

---

GREGORY GARCIA  
Interim Director of Facilities Maintenance and Operations  
Facilities Services Division

\_\_\_ Approved as to budget impact statement.

## EXHIBIT A

### BOARD DISTRICT PRIORITY AND REGION PRIORITY PROJECTS

Item	Board District	Region	School	Project	Managed Program	Project Budget	Anticipated Construction Start	Anticipated Construction Completion
1	1	W	Alta Loma ES	Install new electronic free-standing marquee	RP	\$ 38,963	Q1-2025	Q2-2025
2	1	W	Palms MS	Provide exterior lunch tables	BDP <sup>1</sup>	\$ 63,274	Q4-2024	Q2-2025
3	2	E	Del Olmo ES	Provide exterior benches	BDP	\$ 23,320	Q4-2024	Q2-2025
4	3	N	Anatola ES	Install new chain link privacy fence	BDP	\$ 35,370	Q1-2025	Q2-2025
5	3	N	Bassett ES	Install parking lot swing gates	BDP	\$ 47,377	Q1-2025	Q2-2025
6	3	N	Chatsworth Charter HS*	Provide exterior lunch tables	BDP	\$ 88,360	Q4-2024	Q2-2025
7	3	N	Chatsworth Charter HS*	Upgrade lighting system in multipurpose room	RP <sup>2</sup>	\$ 54,283	Q2-2025	Q3-2025
8	3	N	Porter MS	Provide classroom furniture	BDP	\$ 53,393	Q4-2024	Q2-2025
9	4	W	Westside Global Awareness Magnet	Install new landscaping and irrigation	BDP	\$ 135,720	Q4-2025	Q1-2026
10	5	E	28th St. ES	Provide classroom furniture	RP <sup>3</sup>	\$ 50,000	Q4-2024	Q2-2025
11	5	W	Harvard ES	Install new wrought iron fence	BDP	\$ 38,059	Q1-2025	Q2-2025
12	5	W	Hollywood ES	Install new pedestrian gate	RP	\$ 37,153	Q2-2025	Q2-2025
13	6	N	Sylmar Charter HS*	Provide classroom furniture	BDP	\$ 43,315	Q4-2024	Q2-2025
<b>TOTAL</b>						<b>\$ 708,587</b>		

\* LAUSD affiliated charter school

<sup>1</sup> Palms MS - Although this is a Board District 1 (BD1) BDP project, Region West (RW) will contribute \$31,600 towards this budget. The project budget shown here includes this contribution. The amount will be transferred from the RW spending target to the BD1 spending target.

<sup>2</sup> Chatsworth Charter HS - Although this is a Region North (RN) RP project, Board District 3 (BD3) will contribute \$27,100 towards this budget. The project budget shown here includes this contribution. The amount will be transferred from the BD3 spending target to the RN spending target.

<sup>3</sup> 28th St. ES - Although this is a Region East (RE) RP project, Board District 5 (BD5) will contribute \$25,000 towards this budget. The project budget shown here includes this contribution. The amount will be transferred from the BD5 spending target to the RE spending target.

NOTE: Budgets for marquee projects may vary depending on size, type, location, etc.



**LAUSD**  
**UNIFIED**

## **Board District Priority and Region Priority Projects**

Bond Oversight Committee Meeting  
October 10, 2024

# Board District Priority and Region Priority Projects

Item	Board District	Region	School	Project Description	Managed Program	Project Budget	Anticipated Construction Start	Anticipated Construction Completion
1	1	W	Alta Loma ES	Install new electronic free-standing marquee	RP	\$ 38,963	Q1-2025	Q2-2025
2	1	W	Palms MS	Provide exterior lunch tables	BDP <sup>1</sup>	\$ 63,274	Q4-2024	Q2-2025
3	2	E	Del Olmo ES	Provide exterior benches	BDP	\$ 23,320	Q4-2024	Q2-2025
4	3	N	Anatola ES	Install new chain link privacy fence	BDP	\$ 35,370	Q1-2025	Q2-2025
5	3	N	Bassett ES	Install parking lot swing gates	BDP	\$ 47,377	Q1-2025	Q2-2025
6	3	N	Chatsworth Charter HS*	Provide exterior lunch tables	BDP	\$ 88,360	Q4-2024	Q2-2025
7	3	N	Chatsworth Charter HS*	Upgrade lighting system in multipurpose room	RP <sup>2</sup>	\$ 54,283	Q2-2025	Q3-2025
8	3	N	Porter MS	Provide classroom furniture	BDP	\$ 53,393	Q4-2024	Q2-2025
9	4	W	Westside Global Awareness Magnet	Install new landscaping and irrigation	BDP	\$ 135,720	Q4-2025	Q1-2026
10	5	E	28th St. ES	Provide classroom furniture	RP <sup>3</sup>	\$ 50,000	Q4-2024	Q2-2025
11	5	W	Harvard ES	Install new wrought iron fence	BDP	\$ 38,059	Q1-2025	Q2-2025
12	5	W	Hollywood ES	Install new pedestrian gate	RP	\$ 37,153	Q2-2025	Q2-2025
13	6	N	Sylmar Charter HS*	Provide classroom furniture	BDP	\$ 43,315	Q4-2024	Q2-2025
<b>TOTAL</b>						<b>\$ 708,587</b>		

\* LAUSD affiliated charter school

<sup>1</sup> Palms MS - Although this is a Board District 1 (BD1) BDP project, Region West (RW) will contribute \$31,600 towards this budget. The project budget shown here includes this contribution. The amount will be transferred from the RW spending target to the BD1 spending target.

<sup>2</sup> Chatsworth Charter HS - Although this is a Region North (RN) RP project, Board District 3 (BD3) will contribute \$27,100 towards this budget. The project budget shown here includes this contribution. The amount will be transferred from the BD3 spending target to the RN spending target.

<sup>3</sup> 28th St. ES - Although this is a Region East (RE) RP project, Board District 5 (BD5) will contribute \$25,000 towards this budget. The project budget shown here includes this contribution. The amount will be transferred from the BD5 spending target to the RE spending target.

NOTE: Budgets for marquee projects may vary depending on size, type, location, etc.



# Westside Global Awareness Magnet

## Install new landscaping and irrigation (Item #9)

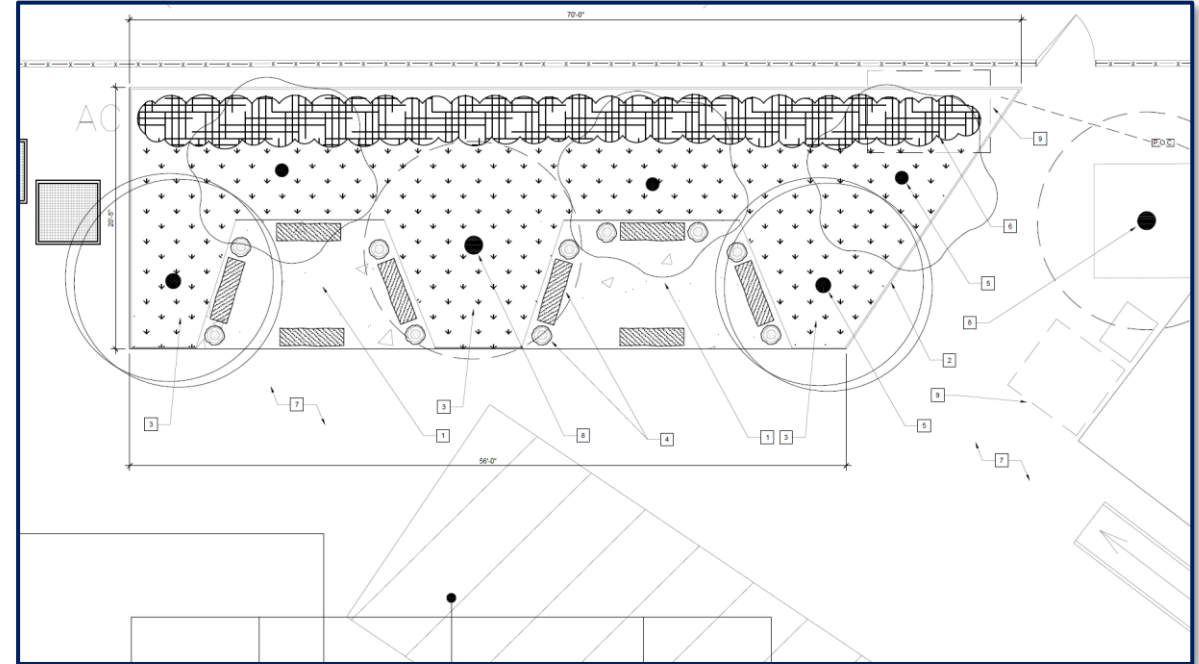
This project is to install approximately 1,285 sq ft of landscaping and irrigation.

*Project Budget:* \$135,720

*Construction Schedule:* Q4 2025 – Q1 2026



Development Area

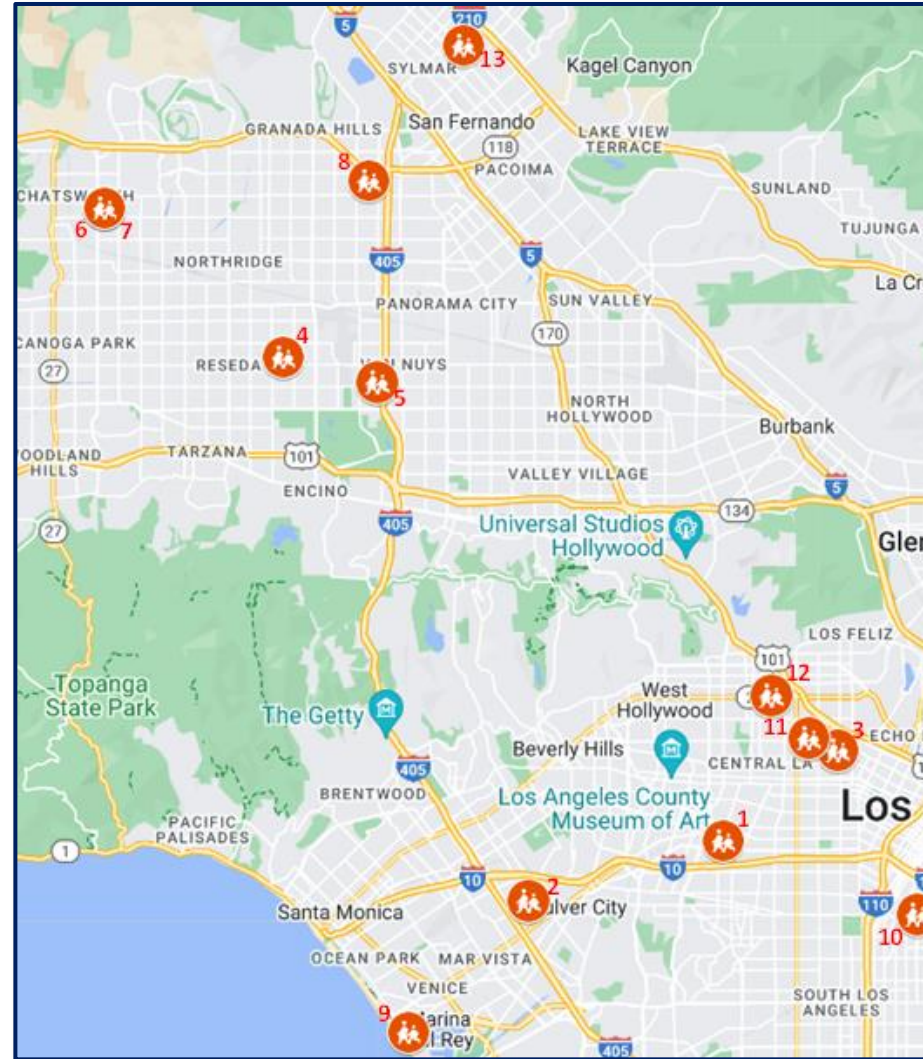


Concept Drawing - Subject to Change

# Map of Board District Priority and Region Priority Projects

(Prepared by BOC Staff)

<p><b>1. Alta Loma Elementary (K- 5)</b> 1745 VINEYARD AVE, LOS ANGELES, CA 90019; 323-939-2113; <a href="https://explore.lausd.org/school/1208202/Alta-Loma-El-DTS">https://explore.lausd.org/school/1208202/Alta-Loma-El-DTS</a>; Enrollment: 378 students (138 in Dual Language); Board District 1; Region West; LA Mid-City CoS</p>
<p><b>2. Palms Middle School (6- 8)</b> 10860 WOODBINE ST, LOS ANGELES, CA 90034; 310-253-7600; <a href="https://explore.lausd.org/school/1834001/Palms-Middle-School">https://explore.lausd.org/school/1834001/Palms-Middle-School</a>; Enrollment: 1,203 students (759 in Magnet); Board District 1; Region West; Hamilton CoS</p>
<p><b>3. Frank Del Olmo Elementary (K- 5)</b> 100 N NEW HAMPSHIRE AVE, LOS ANGELES, CA 90004; 213-427-7200; <a href="https://explore.lausd.org/school/1238601/Frank-Del-Olmo-Elementary">https://explore.lausd.org/school/1238601/Frank-Del-Olmo-Elementary</a>; Enrollment: 491 students; Board District 2; Region East; Downtown CoS</p>
<p><b>4. Anatola Avenue Elementary (K- 5)</b> 7364 ANATOLA AVE, LAKE BALBOA, CA 91406; 818-343-8733; <a href="https://explore.lausd.org/school/1211001/Anatola-Avenue-Elementary">https://explore.lausd.org/school/1211001/Anatola-Avenue-Elementary</a>; Enrollment: 257 students; Board District 3; Region North; Cleveland CoS</p>
<p><b>5. Bassett Street Elementary (K- 5)</b> 15756 BASSETT ST, LAKE BALBOA, CA 91406; 818-782-1340; <a href="https://explore.lausd.org/school/1232301/Bassett-Street-Elementary">https://explore.lausd.org/school/1232301/Bassett-Street-Elementary</a>; Enrollment: 627 students (126 in Magnet and 62 in Dual Language); Board District 3; Region North; Reseda CoS</p>
<p><b>6. Chatsworth Charter High School (9-12)*</b> 10027 LURLINE AVE, CHATSWORTH, CA 91311; 818-678-3400; <a href="https://explore.lausd.org/school/1858301/Chatsworth-Charter-High-School">https://explore.lausd.org/school/1858301/Chatsworth-Charter-High-School</a>; Enrollment: 1,732 students (285 in Magnet); Board District 3; Region North; Cnga Pk/Chtswrth CoS</p>
<p><b>7. Chatsworth Charter High School (9-12)*</b> 10027 LURLINE AVE, CHATSWORTH, CA 91311; 818-678-3400; <a href="https://explore.lausd.org/school/1858301/Chatsworth-Charter-High-School">https://explore.lausd.org/school/1858301/Chatsworth-Charter-High-School</a>; Enrollment: 1,732 students (285 in Magnet); Board District 3; Region North; Cnga Pk/Chtswrth CoS</p>



<p><b>8. George K Porter Middle School (6- 8)</b> 15960 KINGSBURY ST, GRANADA HILLS, CA 91344; 818-920-2050; <a href="https://explore.lausd.org/school/1835401/George-K-Porter-Middle-School">https://explore.lausd.org/school/1835401/George-K-Porter-Middle-School</a>; Enrollment: 1,006 students (465 in Magnet); Board District 3; Region North; Kenndy/NAHS/VAAS CoS</p>
<p><b>9. Westside Global Awareness Magnet (K- 8)</b> 104 ANCHORAGE ST, MARINA DEL REY, CA 90292; 310-821-2039; <a href="https://explore.lausd.org/school/1331101/Westside-Global-Awareness-Magnet">https://explore.lausd.org/school/1331101/Westside-Global-Awareness-Magnet</a>; Enrollment: 210 students; Board District 4; Region West; Venice CoS</p>
<p><b>10. 28th Street Elementary (K- 5)</b> 2807 STANFORD AVE, LOS ANGELES, CA 90011; 323-232-3496; <a href="https://explore.lausd.org/school/1728801/28th-Street-Elementary">https://explore.lausd.org/school/1728801/28th-Street-Elementary</a>; Enrollment: 488 students (107 in Dual Language); Board District 5; Region East; So Los Angeles CoS</p>
<p><b>11. Harvard Elementary (K- 5)</b> 330 N HARVARD BLVD, LOS ANGELES, CA 90004; 323-953-4540; <a href="https://explore.lausd.org/school/1204201/Harvard-Elementary">https://explore.lausd.org/school/1204201/Harvard-Elementary</a>; Enrollment: 256 students (75 in Dual Language); Board District 5; Region West; Hollywood CoS</p>
<p><b>12. Hollywood Elementary (K- 5)</b> 1115 TAMARIND AVE, LOS ANGELES, CA 90038; 323-464-0331; <a href="https://explore.lausd.org/school/1654901/Hollywood-Elementary">https://explore.lausd.org/school/1654901/Hollywood-Elementary</a>; Enrollment: 193 students; Board District 5; Region West; Hollywood CoS</p>
<p><b>13. Sylmar Charter High School (9-12)*</b> 13050 BORDEN AVE, SYLMAR, CA 91342; 818-833-3700; <a href="https://explore.lausd.org/school/1887801/Sylmar-Charter-High-School">https://explore.lausd.org/school/1887801/Sylmar-Charter-High-School</a>; Enrollment: 1,518 students (379 in Magnet); Board District 6; Region North; San Frnndo/Sylmr CoS</p>



\* LAUSD affiliated charter school  
\*\* LAUSD school with co-located charter(s)

**Note:** Data per LAUSD Open Data Portal with Student Enrollment as of 2023-2024. Enrollment: Number does not include Independent Charter Schools. This indicator represents the number of students enrolled in transitional kindergarten through twelfth grade on Norm Day. Norm Day is generally the fifth Friday of the school year and has been designated by the District as the official count day for the allocation of various school resources. These counts include pre-kindergarten special education students enrolled in LA Unified elementary schools. Data by Board Districts per LAUSD Open Data Portal and LAUSD School Explorer websites.

**Questions?**